

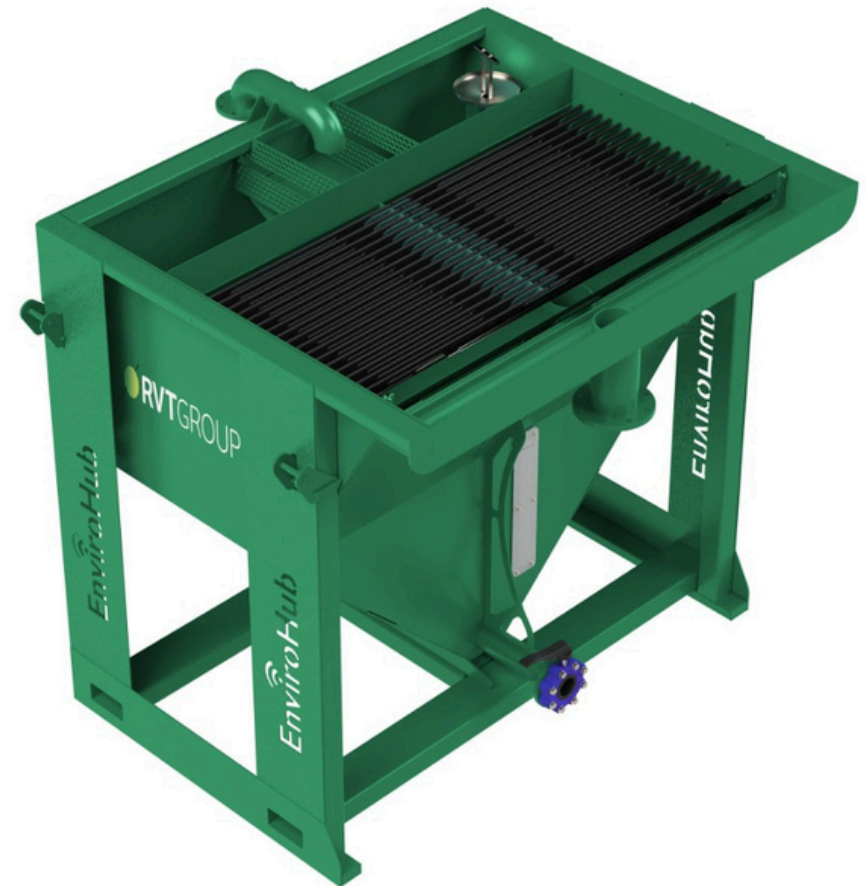


EnviroHub® HL20 Lamella Plate Settlement Tank

The Lamella Clarifier is an advanced settlement tank, designed to remove solids from waste water flows and enable clear water to be discharged.

The tank design slows the water flow and its internal inclined plates provide a very high settlement area within a compact footprint. The Lamella can be used alone for settling heavy and fine solids, or combined with chemical dosing pre-treatment for optimum removal of slow setting and colloidal particle. Solids accumulate in the sludge hopper at the bottom of the tank, and can be discharged from the valve as it accumulates.

Modular tanks allow the configuration to be adapted, with high flows being split between multiple tanks.



Features

- ✓ Bauer connections
- ✓ Lifting points
- ✓ Removable Lamella plates for easy cleaning
- ✓ Oil / water separation and final polishing point if required
- ✓ Provision for water quality to be incorporated

Key Applications

- ✓ Excavation dewatering
- ✓ Surface run-off settlement
- ✓ Process water settlement

[Request Price](#)



Water Treatment

EnviroHub® HL20 Lamella Plate Settlement Tank

- Effective water treatment depends upon a carefully balanced and well maintained system; changes to flow rates, incoming water quality and neglect may result in out of specification water being discharged. It remains the contractors responsibility to ensure that water discharged from their site is compliant with their discharge permit.
- Typical flow rates are up to 5l/s; water treatment equipment must be optimised onsite and the final treated flow rates that can be achieved will depend on the site-specific water quality and discharge requirements
- Water gravity flows from the Lamella tank; if the discharge location is not in close proximity consider a holding tank and booster pump
- Power supplies, pump packages and further chemical dosing / filtration options can be added on request

Technical Data	
Mass (Empty)	2,000kg
Mass (Full)	6,000kg
Length	2m
Width	2.4m
Height	2.3m
Area/Capacity	19.95m ² Effective Settlement Area
Setting Flow Rate Limit	20m ³ /h
Total volume	4m ³
Sludge Volume	1m ³
Max Ground Slope Rise Widthways	30mm
Max Ground Slope Rise Lengthways	80mm
Max Ground Slope Widthways	0.8 degrees
Max Ground Slope Lengthways	2.4 degrees
Connections	Inlet – 4" Bauer Outlet – 6" Bauer
Maintainence	Routine desludging when equipment is in operation Regular jetwashing of Lamella plates Sludge storage & disposal



Water Treatment

EnviroHub® HL20 Lamella Plate Settlement Tank



*These images are of the TT10 Treatment Tank and are for illustration purposes only.

Prospect House
Riverside Way
Dartford
Kent
DA1 5BS

T.+44 (0) 844 324 0601
F.+44 (0) 844 324 0602
E. info@rvtgroup.co.uk

www.rvtgroup.co.uk

©Copyright RVT Group Ltd 2024

 **RVTGROUP**[™]
Protecting people and our environment