

VENTEX® Floor Fan 500P

Light and compact, the 500P Floor Fan is designed to move large volumes of air, creating a high level of air movement in the local area.

It can be used in the summer to create a cooling effect for those working in the immediate area. It can also be used in winter months to circulate warm, dry air for an even heating or drying effect.

Portable, light and with a tilting fan housing, the 500P can be quickly and easily moved into the required position.

A three-speed control switch allows you to choose the most effective airflow for your environment.

Features & Benefits

- ✓ Portable and light
- ✓ 6,000m³ /hr airflow
- ✓ 3-speed settings
- ✓ 110v 16a

Key Applications

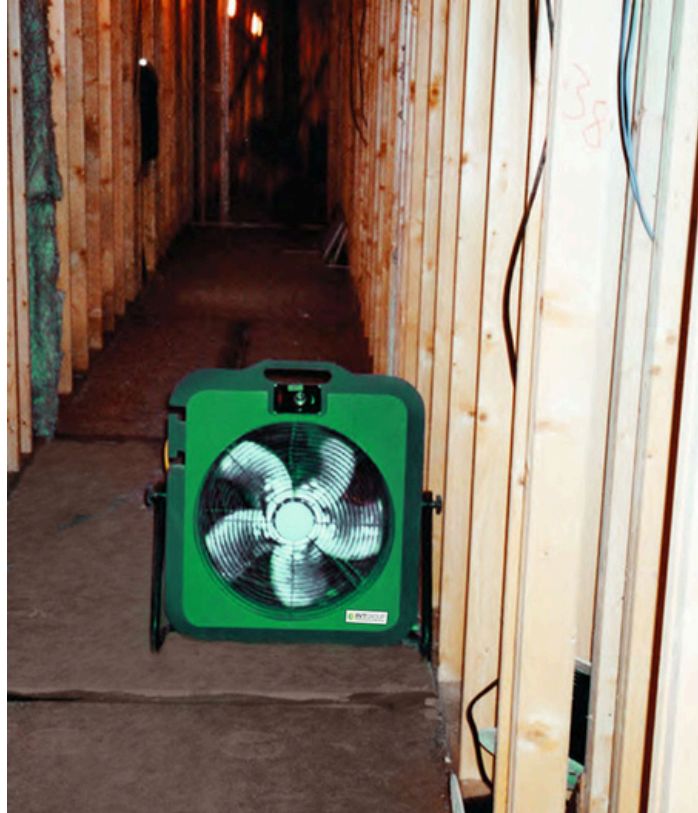
- ✓ Gymnasiums
- ✓ Production Lines
- ✓ Halls
- ✓ Retail Outlets
- ✓ Marquees
- ✓ Factories

[Request Price](#)



VENTEX®

VENTEX® Floor Fan 500P



Fan Unit	VENTEX® Floor Fan
Maximum Airflow	6,000m ³ /h
Ducting diameter	N/A
Plug	16a 3-pin
Voltage	110v
Running Current	4 amps
Minimum Power Supply	3kva tool transformer
Length	200mm
Width	800mm
Height	820mm
Weight	17kg
Minimum Power Supply	3kva tool transformer
Noise*	74 – 76 DbA @ 3m

*The physical noise experienced will vary according to how the unit is used and the characteristics of the environment around it

Prospect House
Riverside Way
Dartford
Kent
DA1 5BS

T.+44 (0) 844 324 0601
F.+44 (0) 844 324 0602
E. info@rvtgroup.co.uk

www.rvtgroup.co.uk

©Copyright RVT Group Ltd 2020



RVTGROUP[™]
Protecting people and our environment