

VENTEX® Axial Fan 450M

The 450M is a robust Axial fan, designed to provide the highest possible airflow in environments where space and power are limited

Moving around four times as much as a typical 12" air-mover, the 450M is ideal for ventilating or extracting from large areas.

It is designed to suit 450mm outlet and 500mm intake ducting.

With castor wheels and handles, the 450M is highly mobile.

Features & Benefits

- ✓ Mobile and powerful
- ✓ 10,000m³ /hr airflow
- ✓ 110v 32a
- ✓ Used with dust filtration
- ✓ Ideal for high volume ventilation and extraction
- ✓ Suitable for ducting

Key Applications

- ✓ Basement ventilation
- ✓ Portable ventilation
- ✓ This fan can be used to extract dust



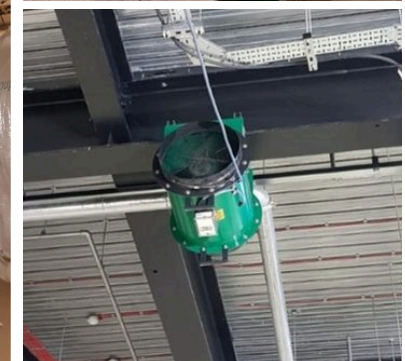
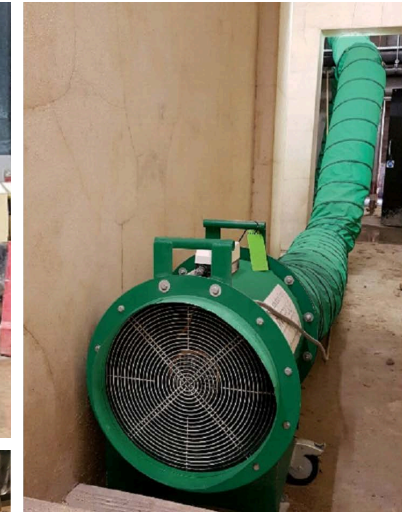
[Request Price](#)



VENTEX®

VENTEX® Axial Fan 450M

Fan Unit	VENTEX® Axial Fan 450M
Maximum Airflow	10,000m ³ /h
Outlet Ducting Diameter	450mm
Intake Ducting Diameter	500mm
Spigot Sizes	450mm
Plug	32a 3-pin
Voltage	110v
Motor Size	2.45 kW
Switch Type	Direct on Line
Start Current	92 amps
Running Current	19 amps
Length	650mm
Width	570mm
Height	835mm
Generator size	6 Kva
Attenuator/ Attenuation	Optional
Weight	50kg
Lifting Method	Forks / Lifting slings



Power cable length and the need to power other equipment may influence the exact generator size required.
* Noise levels are given as a guidance only, as the location and loading of the fan will affect the final noise output. Noise levels will be at their loudest opposite the intake.

