



MONITEX® XD1+ Personal Dust Monitor

The **MONITEX® XD1+ Personal Dust Monitor** is designed to provide detailed real-time data on airborne particulate levels so that users can take appropriate actions to stay safe and ensure personnel are fully protected from particulate-related health hazards. The XD1+ allows users to monitor particulate matter values (PM) to indicate and warn of harmful personal exposure in working environments. Measurement information is identified on the device in the form of short-term exposure limit (STEL) or long-term exposure limit / time-weighted average (TWA) audio and visual alarms.

The XD1+ is small and lightweight to give users the freedom to do their job whilst consistently monitoring the levels of respirable particulate matter. It should be positioned within the breathing zone (defined as the 30cm hemispherical zone below the nose and mouth). This monitor will give a clear indication of the level of particulate in the air in real-time.

The XD1+ has virtually zero maintenance and does not use pumps or filters in operation. It can datalog at intervals from 1 seconds up to every 60 seconds. Real-time data can be viewed on a mobile device via the free to download BreatheMOBILE App which uses Bluetooth to connect to the monitor.

This monitor is small and lightweight, has a large data storage capacity (up to 6 months), and can report readings in both mg/m³ and ug/m³.



Features & Benefits

- ✓ 16 hours (full charge at ambient temperature)
- ✓ Virtually zero maintenance
- ✓ View real-time data via an app on your phone - data can be download via BreatheLite PC Software
- ✓ No pumps, filters, sampling heads, tubes, impactors or any other consumable parts
- ✓ User - configurable audio-visual alarms to provide instant warnings to workers who exceed thresholds

Key Applications

- ✓ Personal dust exposure monitoring
- ✓ Portable dust monitoring



[Request Price](#)





MONITEX® XD1+ Personal Dust Monitor

Download your data, configure your device, maintain audit trails and run compliance checks – all quickly and easily using the free BreatheLITE software.

Download BreatheMOBILE on your phone, with “tap to pair” Bluetooth technology to start tracking real-time particulate measurements in your environment.



Choose your PM size



View real-time data or download historic data



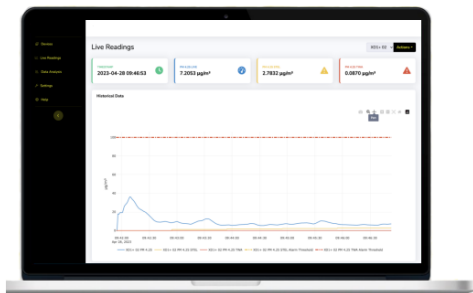
Choose your logging intervals



Customise your density



Select your own TWA (time-weighted average) graphing



The XD1+ is supplied with alerts pre-set to the following limits:

- Size PM 4.25 (respirable fraction)
- Short Term Exposure Limit (STEL) 10mg/m3 over 15 minutes
- Time Weighted Average (TWA) 4mg/m3 over 8 hours

These limits are based on paragraphs 43 and 64 of EH40:2020 Workplace Exposure Limits which is downloadable on the following link. <https://www.hse.gov.uk/pubns/books/eh40.htm>

It is the responsibility of the user to ensure that the limits are appropriate for their specific application and to adjust them if necessary.

The use of these monitors and the collection and analysis of data should be overseen by a suitably qualified health and safety professional or occupational hygienist. RVT Group can accept no liability for decisions or actions based on the use of the Monitex XD1+ dust monitor.

Technical Specifications

Size h x w x d	112mm x 64 mm x 25 mm
Weight	170g
Sensing technology	OPC light-scatter photometer
Particulate measurements	0.1 µm to 10 µm
PM measurements capability	PM1.0, PM2.5, PM4.25 and PM10
Operating range*	Up to ~150 mg/m ³
PM density range	0.8 g/ml to 8.0 g/ml (default to 1.65 g/ml)
Units of measurement	µg/m ³ - logged on-device mg/m ³ or µg/m ³ - BreatheLITE / BreatheMOBILE application
Sampling interval	Custom 1 second intervals (default 10 seconds)
Flow rate	0.1 L/min (typical)
Accuracy	± 10%

