

### MONITEX® Area Dust Monitor

The MONITEX® Area Dust Monitor is designed for those who need to monitor and manage dust and particulate emissions continuously and in real-time.

This Area Dust Monitor is a nephelometer-based instrument that delivers affordable and accurate measurement of PM1, PM2.5, PM10 or TSP. This unit is ideal for use indoors and outside.

#### Key Product Features

- ✓ Real-time measurements of PM1, PM2.5, PM10 or TSP dust particles
- ✓ Measures and reports data in 1 minute intervals with user selectable averaging
- ✓ MCERTS certified accuracy and repeatability - only for PM10
- ✓ Rugged weatherproof enclosure with solar shielding for very hot climates
- ✓ Quick set up and relocation in under 10 minutes
- ✓ Email / SMS alerts (optional)
- ✓ This unit can also be solar and hydrogen powered

#### Key Applications

- ✓ Industrial perimeter monitoring: construction and waste sites, quarries and mines, ports and bulk handling terminals, transport hubs
- ✓ Near road: motorways, traffic information systems
- ✓ Short term monitoring of 'hot spots'
- ✓ Community exposure: epidemiological studies, microenvironment, residential, schools, hospitals
- ✓ Environmental Impact Assessments



[Request Price](#)



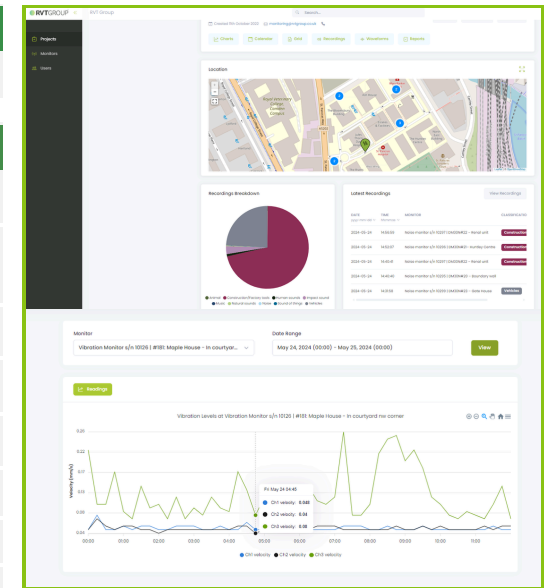
# MONITEX®

## MONITEX® Area Dust Monitor

Compared to reference-equivalent monitors like TEOMs and BAMs the Monitex® Area Dust Monitor reports accurately at 1 minute interval. In addition, the Area Dust Monitor weighs less than 13 kg, is mobile and able to run off remote power systems. Unlike other continuous real-time dust monitors the Area Dust Monitor is built tough for long-term outdoor monitoring. It has a robust enclosure with integrated solar shielding, 20 years of on-board data storage, a wide range of outputs for flexible integration, and a suite of optional environmental sensors e.g. wind, noise, weather, solar to choose from. It comes with two powerful cloud based software systems with no additional charge.

Technology	Sizes	Range	Accuracy	Flow Rate	Lower Detectable Limit (2σ)
Nephelometer	PM1, PM2.5, PM10 or TSP	0 to 2000 µg/m <sup>3</sup>	<±(2 µg/m <sup>3</sup> + 5% of reading)	2.0 LPM	<1 µg/m <sup>3</sup>

Technical Specifications	
Communications	Cellular 4G
Software	Accessed via web browser (IE, Firefox, Chrome, Safari) Cloud: Runs on secure 'cloud' servers Cloud Features: data acquisition, email alerts and optional SMS
Averaging period	1 min, 5 min, 10 min, 15 min, 30 min, 1 hr, 2hr, 4 hr, 8 hr, 12 hr, 24 hr
Power requirements	100-260VAC (standard): 15W / 24W* • Regulated 12VDC (if required): 15W / 24W
Enclosure	Lockable IP65 GRP cabinet with integrated aluminium solar shield armour Inlet: 36cm heated inlet
Dimensions	483H x 330W x 187D mm (including solar shield armour & mounting brackets)
Weight	<13 kg
Environmental operating range	-10°C to +50°C
Mounting	Pole, tripod and wall mounting brackets included



Webbased data & diagnostics software.





# MONITEX®

## MONITEX® Area Dust Monitor

Examples of the Area Dust Monitor on site.



This unit can also be solar-powered;  
please ask us for more information.

