



CLIMEX®

CLIMEX® Electric Fan Heater 18kW

CLIMEX® Electric Fan Heater 18kW

The CLIMEX® Electric Fan Heater 18kW is a small, mobile unit, designed to heat large floor areas.

Two heat settings (fan only/12/18kw) allow you to run the unit efficiently when its full heat output is not required. Including an internal thermostat as standard, they can also be supplied with an external thermostat to enable the heater to maintain a specific temperature.

The heater can also be supplied with 300mm ducting, enabling heat to be supplied into tight-access areas. Perforated ducting can also be used to spread the heat output or create a warm air 'curtain' across an opening.

This unit features lockable castors, making it easy to move around on site.



*During seasonal peaks we may supply an alternative model

Features & Benefits

- ✓ 18KW Heat Output
- ✓ Mobile - lockable castors
- ✓ Can be used with ducting
- ✓ 415v 32a

Key Applications

- ✓ Heating large floor areas
- ✓ Maintaining ambient temperatures
- ✓ Drying paint and plaster

[Request Price](#)

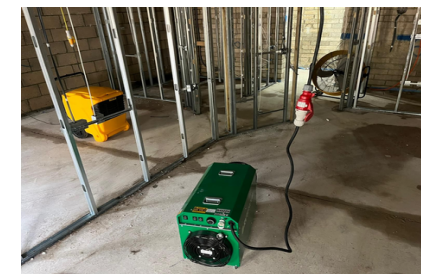
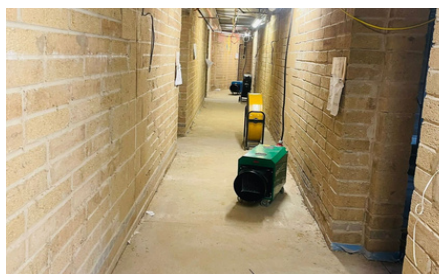
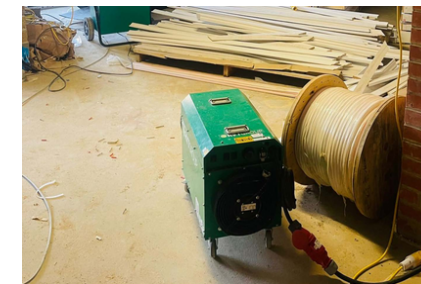


CLIMEX®

CLIMEX® Electric Fan Heater 18kW

Technical Specification

Heat Output	18KW
Heat Output	61,416 BTU
Airflow	1500 M3h
Ducting diameter	300mm
Plug	32A 5 Pin 415v
Voltage	415v
Running Current	28A
Internal Thermostat	Yes
Remote Thermostat	Yes
Overheat protector	Yes
length	900mm
width	360mm
height	540mm
Weight	29.5Kg
Noise	73dBa



The Effective Drying Triangle

When used for drying, we recommend adopting RVT's Effective Drying Triangle, which incorporates warmth, air movement and dehumidification.

Warmth/ heat raises the room temperature and so lowers the relative humidity of the air. Air movement across a substrate draws the water to the surface, where it evaporates, and dehumidification extracts water from the air. Speak to one of our consultants to learn more about effective drying-out programmes.

